

Spring 2021 Enrollment Report



Rishi Raj Poudyal/Carmella Sanchez
 (505) 747-2117 / (505) 747-2118
rishi.poudyal@nmmc.edu / carmella@nmmc.edu

Office of Institutional Research
 NORTHERN NEW MEXICO COLLEGE



INTRODUCTION:

The Northern New Mexico College Enrollment Report is an analysis of the semester census date (3rd Friday) data. This document is compiled by the Office of Institutional Research in order to inform Academic Department Chairs, primarily, regarding the current semester student enrollment and course loads. It is intended for both planning and strategic decision making. The report focuses on 8 week and 16-week enrollment.

The data in this publication is compiled using the most recent final census reports, schedules and faculty assignments. All data is collected and maintained using Banner. The intent of this report is to provide an accurate and consistent reference for use by various internal and external stakeholders as well. This effort intends to not only provide quick and easy access to institutional data but also to open-up new ideas and questions. If you have questions or comments regarding this report, please feel free to contact us by email at rishi.poudyal@nnmc.edu .

Unduplicated Declared Majors per Academic Department

Analysis of FTE					
Academic Departments	FTE (Spring 2021)	Head Counts (Spring 2021)	Head Counts (Fall 2020)	% of Declared Students (Spring 2021)	% I&G Academic Affairs Budget (\$5.1M approx.)
Arts, Film and Media	10.0	12	14	1%	6.5%
Biology, Chemistry, and ES	102.8	116	129	11%	11.6%
Business Administration	156.0	181	185	17%	13.3%
Education	67.5	85	94	8%	9.5%
Engineering and Tech	67.1	76	80	7%	13.6%
HPER	0	0	0	0%	0.4%
Humanities and Soc Sciences	84.5	97	118	9%	10.7%
Language & Letters	22.2	23	35	2%	8.7%
Mathematics/Physics	2.8	3	4	0%	7.9%
Nursing and HS	87.0	105	123	10%	17.7%
Technical Trade	1.6	2	0	0%	*
Undeclared	42.6	137	175	13%	NA
Undeclared Dual Credit	92.8	219	297	21%	NA
Total	736.9	1056	1254	100%	100%

Table 1: Unduplicated data consider only the primary major/degree that students have declared. (* This program is not funded by I & G)

Student Credit Hours (SCH) generated per Academic Department (Unduplicated 8 and 16-weeks courses)

Analysis Variable: SCH			
Academic Departments	SCH	%SCH	% I&G Academic Affairs Budget (\$5.1M approx.)
Arts, Film and Media	600	7%	6.5%
Biology, Chemistry, and ES	1304	16%	11.6%
Business Administration	955	12%	13.3%
Education	481	6%	9.5%
Engineering and Tech	584	7%	13.6%
HPER	18	0%	0.4%
Humanities and soc science	1211	15%	10.7%
Language & Letters	1070	13%	8.7%
Mathematics/Physics	998	12%	7.9%
Nursing and HS	497	6%	17.7%
Technical Trade	362	4%	*
Total	8080	100%	100%

Table 2: Here only unique CRN values were considered. (* This program is not funded by I & G)

Types of Degrees (based on duplicated enrollment)

Degree	Number	Percentage
Associate	228	21.59
Bachelor	439	41.57
Certificate	33	3.13
Undeclared	356	33.71

Table 3

Gender Distribution (based on unduplicated enrollment)

Table of Academic Department by Gender			
Academic Departments	Gender		
	F	M	Total
Frequency			
Arts, Film and Media	4	8	12
Biology, Chemistry, and ES	66	50	116
Business Administration	125	56	181
Education	77	8	85
Engineering and Tech	25	51	76
HPER	0	0	0
Humanities and Soc Sciences	69	28	97
Language & Letters	12	11	23
Mathematics/Physics	0	3	3
Nursing and HS	96	9	105
Technical Trade	0	2	2
Undeclared	161	195	356
Total	635	421	1056
Percentage	60%	40%	100%

Table 4

Financial Aid & First-Generation Statistics

First generation college student is defined as being the first person in the immediate family to attend college—i.e.: *neither parent has a college degree*. Prior enrollment reports defined 1st generation as *one parent or less* having a college degree.

Pell Eligible
37% of total headcount
46.8% without dual credit students

Table 5

First Generation
31.18% without dual credit

Table 6

Ethnic Distribution (based on unduplicated enrollment)

Ethnicity	Number	Percentage
American Indian or Alaskan Nat	101	9.56
Asian	16	1.52
Black or African American	23	2.18
Hispanic of any race	772	73.11
Native Hawaiian/Pacific Island	3	0.28
White Non-Hispanic	125	11.84
Non-Resident Alien	7	0.66
Unknow / No Response	9	0.85
Total	1056	100%

Table 7

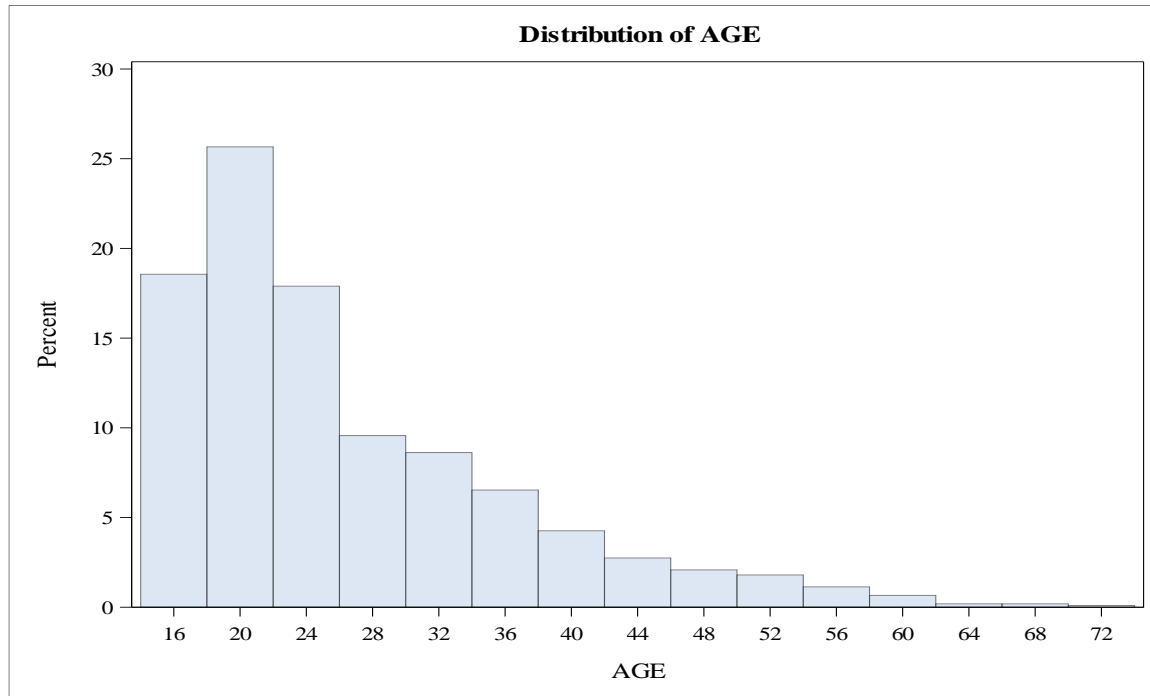
Age Statistics and Distribution (Unduplicated enrollment)

Analysis Variable: AGE			
Minimum	Mean	Median	Maximum
14	25.9	22	73

Table 8

Distribution of Student's Age

Graph 1: Histogram of age distribution of unduplicated enrolled students



Courses offered per Academic Department (8 and 16-weeks courses)

Academic Departments	# Courses offered	Percent
Arts, Film and Media	15	6.02
Biology, Chemistry, and ES	47	18.88
Business Administration	22	8.84
Education	13	5.22
Engineering and Tech	26	10.44
HPER	4	1.61
Humanities and soc science	36	14.46
Language & Letters	28	11.24
Mathematics/Physics	24	9.64
Nursing and HS	24	9.64
Technical Trade	10	4.02
Total	249	100%

Table 9

Courses per Academic Department (8 and 16-weeks courses) by Division

Table of Academic Departments by DIVISION			
Academic Departments	DIVISION		
Frequency	LOWER	UPPER	Total
Arts, Film and Media	14	1	15
Biology, Chemistry, and ES	34	13	47
Business Administration	14	8	22
Education	4	9	13
Engineering and Tech	12	14	26
HPER	4	0	4
Humanities and Soc Science	18	18	36
Language & Letters	27	1	28
Mathematics/Physics	24	0	24
Nursing and HS	20	4	24
Technical Trade	10	0	10
Total	181	68	249
Percentage	73%	27%	100%

Table10

Low Enrolled Courses per Academic Department (Unduplicated 8 and 16-weeks courses)

Analysis Variable: Enrollment		
Academic Departments	Low Enrolled Courses (n<10)	Percent Low Enrolled Courses (n<10)
Arts, Film and Media	8	53%
Biology, Chemistry, and ES	19	40%
Business Administration	11	50%
Education	4	31%
Engineering and Tech	16	62%
HPER	4	100%
Humanities and soc science	16	44%
Language & Letters	6	21%
Mathematics/Physics	7	29%
Nursing and HS	12	50%
Technical Trade	6	60%
Total	112	45%

Table 11: Percentages in this table are based on total numbers per Academic Department (*Clinical Sessions and Capstone have a cap of 8 students). Here, Unique CRN values were considered. (ECED 4479, 4480 and EDUC 4479, 4480 have cap 6-8)

Average Student Enrollment per Course (8 and 16-weeks courses)

Academic Department	Average Number of Students Lower Division	Average Number of Students Upper Division
Arts, Film, and Media	11.9	4.0
Biology, Chemistry, ES	13.9	6.7
Business Administration	11.2	11.4
Education	8.3	11.6
Engineering and Tech	13.2	3.8
HPER	4.5	0
Humanities and Soc Sciences	14.3	9.2
Language & Letters	12.8	1
Mathematics/Physics	13.0	0
Nursing and HS	11.25	7.0
Technical Trade	12.2	0
Total	12.5	7.8
General Average	11.2	

Table 12

Courses: Method of Instruction/Delivery (8 and 16-week courses)

Table of Academic Departments by Instruction methods			
Academic Departments	INSTR_MTHD		
	TR	WEB	Total
Frequency			
Arts, Film and Media	13	2	15
Biology, Chemistry, and ES	43	4	47
Business Administration	14	8	22
Education	7	6	13
Engineering and Tech	26	0	26
HPER	4	0	4
Humanities and soc science	25	11	36
Language & Letters	24	4	28
mathematics/Physics	22	2	24
Nursing and HS	19	5	24
Technical Trade	10	0	10
Total	207	42	249
Percentage	83%	17%	100%

Table 13: TR means face-to-face/traditional, WEB means full online delivery. This table measures CRNS and does not consider the combined in AFM

Courses: Method of Instruction/Delivery vs Type of Faculty (8 and 16 weeks)

Table of faculty types by INSTR_MTHD			
Faculty types	INSTR_MTHD		
Frequency	TR	WEB	Total
Adjunct	88	22	110
Full time	119	20	139
Total	207	42	249

Table 14: TR means face-to-face/traditional, WEB means full online delivery. This table measures CRNS and does not consider the combined in AFM. If we consider unique faculties, we have 62 Adjunct and 44 Full time.

Average Student Enrollment per Course by Method of Delivery (8 and 16 weeks)

Table of average enrollment per instruction method	
INSTR_MTHD	Mean
TR	10.5
WEB	15.0

Table 15

Courses & SCH: Adjunct vs Full Time (8 and 16 weeks courses)

Academic Department	# Courses by Adjunct	# Courses by Full Time	SCH offered by Adjunct	SCH offered by Full Time
Arts, Film, and Media	9	6	475	125
Biology, Chemistry, ES	13	34	483	821
Business Administration	8	14	309	646
Education	6	7	201	280
Engineering and Tech	7	19	220	367
HPER	4	0	18	0
Humanities and Soc Science	19	17	821	506
Language and Letters	22	6	887	183
Mathematics/Physics	6	18	272	726
Nursing and HS	11	13	341	414
Technical Trade	5	5	336	38
Total	110	139	4363	4106
Percentage (%)	44%	56%	52%	48%

Table 16

Unduplicated Declared Majors by Field and Degree

Table of Major by Degree					
Frequency	Major	Degree			Total
		Associate	Bachelor	Certificate	
	ALT Special Education	0	0	6	6
	ALT-Elementary(K-8)	0	0	9	9
	Accounting	0	11	0	11
	Allied Health	6	0	0	6
	Alt Secondary (7-12)	0	0	4	4
	Barbering	8	0	3	11
	Biology	7	31	0	38
	Bookkeeper	0	0	1	1
	Business Administration	18	94	0	112
	Chemistry	2	0	0	2
	Cosmetology	13	0	1	14
	Criminal Justice	6	19	0	25
	Early Childhood Education	6	30	0	36
	Electrical Technology	1	0	1	2
	Electromechanical Engr Tech	0	17	0	17
	Elementary Education	2	28	0	30
	Environmental Science	9	27	0	36
	Film and Digital Media Arts	12	0	0	12
	General Psychology	3	0	0	3
	Humanities	0	1	0	1
	Information Engineering Tech	10	41	0	51
	Liberal Arts	23	0	0	23
	Mathematics	0	3	0	3
	Mechanical Engineering	0	3	0	3
	Microsoft Office Suite	0	0	3	3
	Nursing (ADN)	48	0	0	48
	Office Administration	9	0	0	9
	Pre-Engineering	3	0	0	3
	Project Management	0	20	0	20
	Psychology	0	51	0	51
	Pueblo Indian Studies	1	0	0	1
	RN to BSN	0	51	0	51
	Radiation Control Technician	0	0	5	5
	Radiation Protection	35	0	0	35
	Self-Design	0	12	0	12
	Software Engineering	2	0	0	2
	Substance Abuse Counselor	4	0	0	4
	Total	228	439	33	700
	Non-Degree Seeker		356		

Table 17

Unduplicated Declared Majors by Gender

Table of Major by Gender			
Majors	Gender		
	F	M	Total
Frequency			
ALT Special Education	3	3	6
ALT-Elementary(K-8)	8	1	9
Accounting	8	3	11
Allied Health	6	0	6
Alt Secondary (7-12)	4	0	4
Barbering	3	8	11
Biology	28	10	38
Bookkeeper	1	0	1
Business Administration	77	35	112
Chemistry	2	0	2
Cosmetology	13	1	14
Criminal Justice	12	13	25
Early Childhood Education	36	0	36
Electrical Technology	0	2	2
Electromechanical Engr Tech	5	12	17
Elementary Education	26	4	30
Environmental Science	20	16	36
Film and Digital Media Arts	4	8	12
General Psychology	3	0	3
Humanities	1	0	1
Information Engineering Tech	19	32	51
Liberal Arts	12	11	23
Mathematics	0	3	3
Mechanical Engineering	0	3	3
Microsoft Office Suite	3	0	3
Non-Degree	161	195	356
Nursing (ADN)	41	7	48
Office Administration	8	1	9
Pre-Engineering	1	2	3
Project Management	12	8	20
Psychology	43	8	51
Pueblo Indian Studies	0	1	1
RN to BSN	49	2	51
Radiation Control Technician	3	2	5
Radiation Protection	13	22	35
Self-Design	6	6	12
Software Engineering	0	2	2
Substance Abuse Counselor	4	0	4
Total	635	421	1056

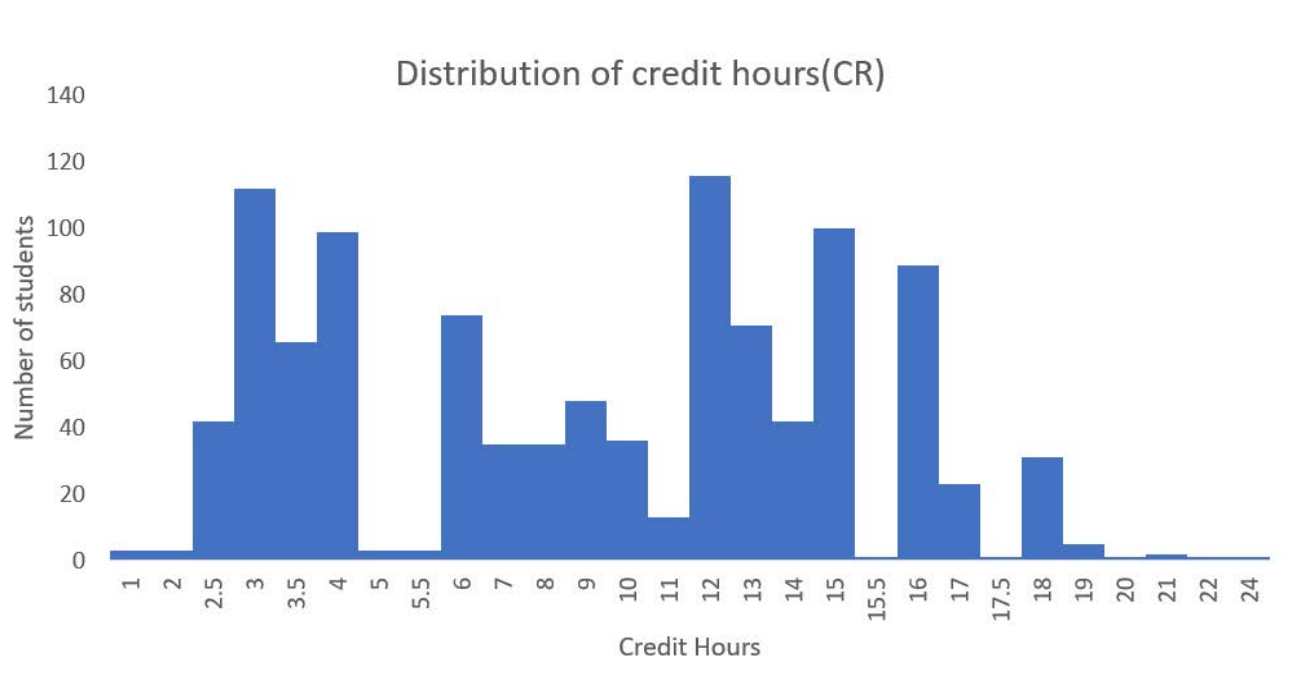
Table 18

Unduplicated Declared Majors by Ethnicity

Table of Major by Ethnicity									
Majors	American Indian or Alaskan Nat	Asian	Black or African American	Hispanic of any race	Native Hawaiian/Pacific Island	Non-Resident Alien	Unknow / No Response	White non-Hispanic	Total
ALT Special Education	0	2	0	3	0	1	0	0	6
ALT-Elementary(K-8)	1	0	0	6	0	0	0	2	9
Accounting	3	0	1	7	0	0	0	0	11
Allied Health	0	0	0	6	0	0	0	0	6
Alt Secondary (7-12)	0	0	0	3	0	0	0	1	4
Barbering	0	0	0	10	0	0	0	1	11
Biology	1	0	3	28	0	0	0	6	38
Bookkeeper	0	0	0	0	0	0	0	1	1
Business Administration	14	2	3	82	0	5	1	5	112
Chemistry	0	0	0	2	0	0	0	0	2
Cosmetology	0	0	0	14	0	0	0	0	14
Criminal Justice	5	0	1	19	0	0	0	0	25
Early Childhood Education	12	1	1	21	0	0	0	1	36
Electrical Technology	0	0	0	2	0	0	0	0	2
Electromechanical Engr Tech	2	0	0	8	0	0	1	6	17
Elementary Education	3	1	1	18	0	0	0	7	30
Environmental Science	3	0	0	27	0	0	0	6	36
Film and Digital Media Arts	2	0	0	8	0	0	0	2	12
General Psychology	2	0	0	1	0	0	0	0	3
Humanities	0	0	0	1	0	0	0	0	1
Information Engineering Tech	5	4	1	36	0	1	1	3	51
Liberal Arts	1	0	2	20	0	0	0	0	23
Mathematics	0	0	0	2	0	0	0	1	3
Mechanical Engineering	0	0	1	2	0	0	0	0	3
Microsoft Office Suite	2	0	0	1	0	0	0	0	3
Non-Degree	30	1	4	263	1	0	6	51	356
Nursing (ADN)	2	0	1	36	1	0	0	8	48
Office Administration	0	0	0	9	0	0	0	0	9
Pre-Engineering	0	1	0	2	0	0	0	0	3
Project Management	1	0	0	15	0	0	0	4	20
Psychology	6	1	2	37	1	0	0	4	51
Pueblo Indian Studies	1	0	0	0	0	0	0	0	1
RN to BSN	1	1	1	40	0	0	0	8	51
Radiation Control Technician	0	1	0	3	0	0	0	1	5
Radiation Protection	1	1	1	25	0	0	0	7	35
Self-Design	2	0	0	10	0	0	0	0	12
Software Engineering	0	0	0	2	0	0	0	0	2
Substance Abuse Counselor	1	0	0	3	0	0	0	0	4
Total	101	16	23	772	3	7	9	125	1056

Table 19

Distribution of total Credit Hours enrolled by each student



Graph 2: Histogram of the Credit Hours per student (the vertical axis is the number of students). Students who take between 12 and 18 credits are only charged tuition for the first 12 credits. Because of this distribution and the attendance of dual credit students, only 88% of the CRs generated are eligible for tuition. Employee tuition waivers decrease this number even further.

Enrollment by Location

City	Frequency	Percent
Espanola	275	26.04
Santa Fe	104	9.85
Santa Cruz	81	7.67
Albuquerque	67	6.34
Alcalde	52	4.92
Ohkay Owingeh	43	4.07
Chimayo	37	3.50
Fairview	36	3.41
Los Alamos	27	2.56
Velarde	27	2.56
Hernandez	20	1.89
Rio Rancho	20	1.89
White Rock	18	1.70
Abiquiu	17	1.61
Chamisal	13	1.23

City	Frequency	Percent
Ojo Caliente	12	1.14
El Rito	11	1.04
Gallina	11	1.04
Penasco	11	1.04

Table 20: Here only location with 1% and more contribution were considered.

Enrollment by High School (First-Time Any College)

High School	Percent
GED New Mexico	33.33
Pojoaque High	12.50
Espanola Valley High	8.33
Los Alamos High	8.33
Capital High School	4.17
Escalante High	4.17
Maine	4.17
McCurdy High	4.17
Pennsylvania	4.17
Santa Fe High	4.17
Taos High School	4.17
V Sue Cleveland High School	4.17
West Mesa High	4.17

Table 21: This table shows enrollment by high school with first time any college.