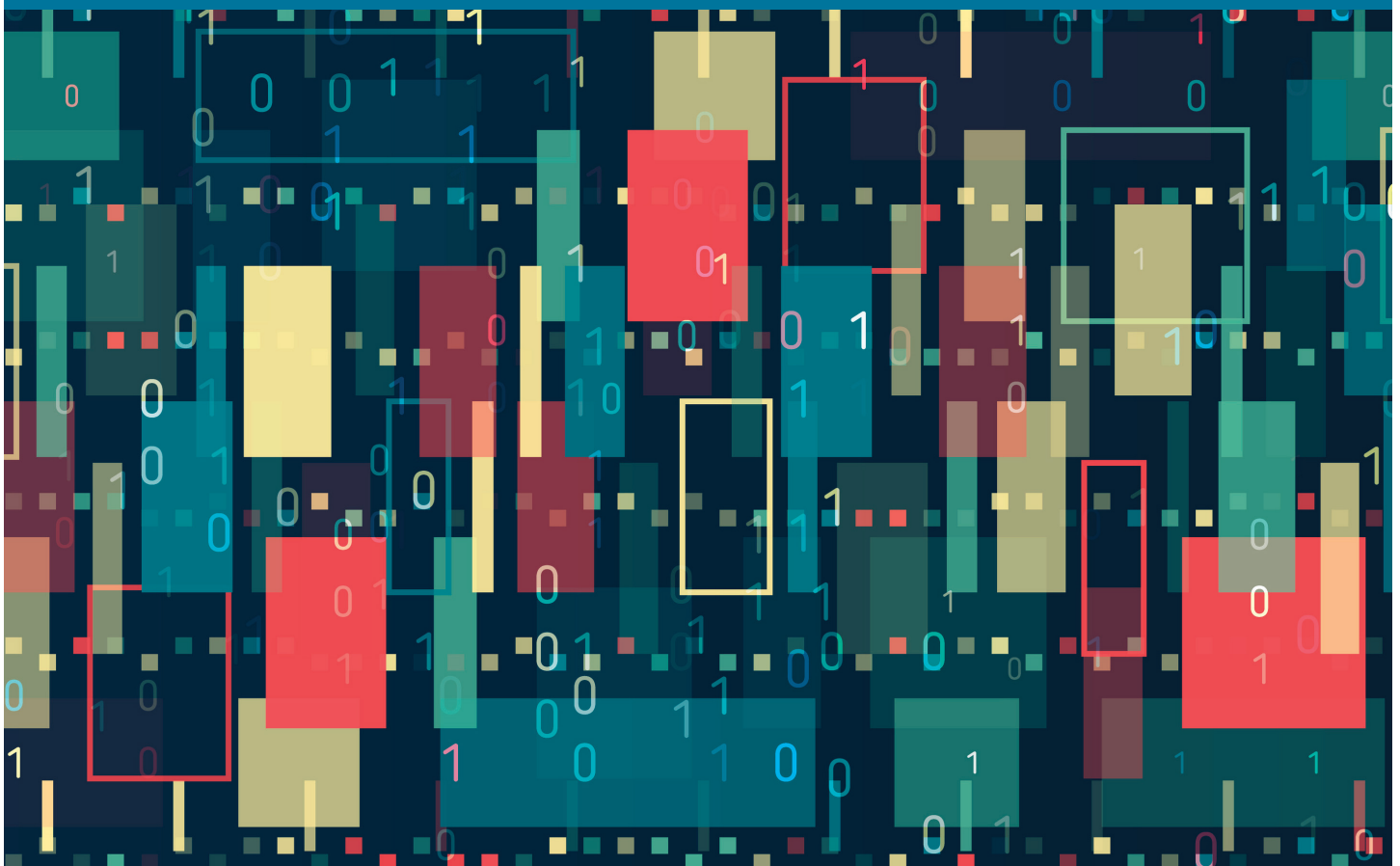


SPRING 2023 / FIRST OF TERM ENROLLMENT REPORT



Rishi Raj Poudyal/Carmella Sanchez
(505) 747-2117 / (505) 747-2118
rishi.poudyal@nmmc.edu / carmella@nmmc.edu

Office of Institutional Research
NORTHERN NEW MEXICO COLLEGE



INTRODUCTION

The Northern New Mexico College Enrollment Report is an analysis of the first of the term data. This document is compiled by the Office of Institutional Research in order to inform Academic Department Chairs primarily regarding the current semester student enrollment and course loads. It is intended for both planning and strategic decision making. This report is prepared at census date (**3rd Friday**), and focuses on first 8-week, and 16-week enrollment. In this report Humanities and Social Science and Arts, Film and Media are combined and named as Arts, Humanities and Social Science. Two additional tables are added in the report. The “**Enrollment by High School (Dual Credit Students)**” table is for capturing dual credit students’ enrollment from different high schools, and “**Course Division (Lower or Upper) VS Faculty Type**” is for capturing lower and upper division courses taught by full time and adjunct faculty.

The data in this publication is compiled using the most recent enrollment, schedules, and faculty assignments data. All data is collected and maintained using Banner. The intent of this report is to provide an accurate and consistent reference for use by various internal and external stakeholders as well. This effort intends to not only provide quick and easy access to institutional data but also to open-up new ideas and questions. If you have any questions or comments regarding this report, please feel free to contact us by email at rishi.poudyal@nnmc.edu .

Unduplicated Declared Majors per Academic Department

Analysis of FTE					
Academic Departments	FTE (Spring 2023)	Head Counts (Spring 2023)	Head Counts (Fall 2022)	% of Declared Students (Fall 2022)	% I&G Academic Affairs Budget (\$5.1approx.)
Arts, Humanities and SS	80.3	98	111	10%	17.1%
Biology, Chemistry, and ES	63.2	88	91	9%	11.6%
Business Administration	172.1	211	226	21%	13.3%
Education	75.4	110	98	11%	9.5%
Engineering and Tech	39.4	55	79	5%	13.6%
HPER	0.0	0	0	0%	0.4%
Language & Letters	22.6	27	40	3%	8.7%
Mathematics/Physics	2.3	3	2	0%	7.9%
Nursing and HS	72.4	107	118	10%	17.7%
Technical Trade	17.8	39	45	4%	*
Undeclared	25.8	122	141	12%	NA
Undeclared Dual Credit	45.1	165	142	16%	NA
Total	616.4	1025	1093	100%	100%

Table 1: Unduplicated data consider only the primary major/degree that students have declared. (* This program is not funded by I & G). Note: FTE is calculated dividing credit hour by 15 (Crhrs/15).

Student Credit Hours (SCH) generated per Academic Department (16 and 1st 8-week courses)

Analysis Variable: SCH			
Academic Departments	SCH	%SCH	% I&G Academic Affairs Budget (\$5.1M approx.)
Arts, Humanities and SS	1416	20%	17.1%
Biology, Chemistry, and ES	870	12%	11.6%
Business Administration	1286	18%	13.3%
Education	521	7%	9.5%
Engineering and Tech	294	4%	13.6%
HPER	13	0%	0.4%
Language & Letters	850	12%	8.7%
Mathematics/Physics	793	11%	7.9%
Nursing and HS	424	6%	17.7%
Technical Trade	576	8%	*
Total	7043	100%	100%

Table 2: Here only unique CRN values were considered. (* This program is not funded by I & G)

Types of Degrees (based on unduplicated enrollment)

Degree	Number	Percentage
Associate	267	26%
Bachelor	418	41%
Certificate	53	5%
Undeclared	122	12%
Undeclared Dual Credit	165	16%

Table 3

Gender Distribution (based on unduplicated enrollment)

Table of Academic Department by Gender			
Academic Departments	Gender		
	F	M	Total
Arts, Humanities and SS	67	31	98
Biology, Chemistry, and ES	51	37	88
Business Administration	150	61	211
Education	97	13	110
Engineering and Tech	19	36	55
HPER	0	0	0
Language & Letters	13	13	27*
Mathematics/Physics	1	2	3
Nursing and HS	100	7	107
Technical Trade	3	35	39*
Undeclared	18	104	122
Undeclared Dual Credit	93	69	165*
Total	612	408	1025
Percentage	57%	43%	100%

*5 students (1L&L, 1 TechTrade, and 3 DC responded neutral) Table 4

Financial Aid & First-Generation Statistics:

First generation college student is defined as being the first person in the immediate family to attend college—i.e.: *neither parent has a college degree*. Pell Eligible and First generation are determined only if they fill Financial Aid.

Pell Eligible
31% of total headcount
36% Non-dual credit students

Table 5

First Generation (non-dual credit)
27% first generation
73% Unknown

Table 6

Ethnic Distribution (based on unduplicated enrollment)

Ethnicity	Number	Percentage
American Indian or Alaskan Nat	112	10.93
Asian	20	1.95

Ethnicity	Number	Percentage
Black or African American	19	1.85
Hispanic of any race	728	71.02
Native Hawaiian/Pacific Island	2	0.20
White Non-Hispanic	123	12.00
Non-Resident Alien	6	0.59
Unknown / No Response	15	1.46
Total	1025	100.00%

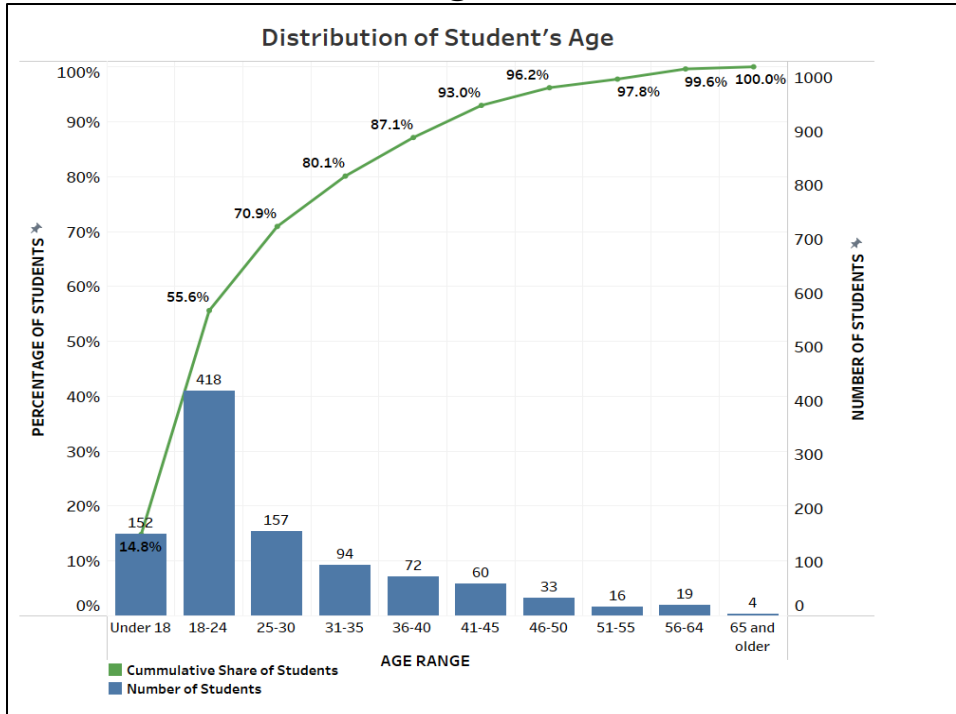
Table 7

Age Statistics and Distribution (Unduplicated enrollment)

Analysis Variable: AGE			
Minimum	Mean	Median	Maximum
14	27	23	76

Table 8

Distribution of Student's Age



Graph 1: Combo chart showing distribution of students with ages and cumulative percentage

Courses offered per Academic Department (16 and 1st 8-week courses)

Academic Departments	# Courses offered	Percent
Arts, Humanities and SS	50	21.10
Biology, Chemistry, and ES	43	18.14
Business Administration	22	9.28
Education	17	7.17
Engineering and Tech	21	8.86

Academic Departments	# Courses offered	Percent
HPER	3	1.27
Language & Letters	22	9.28
Mathematics/Physics	19	8.02
Nursing and HS	16	6.75
Technical Trade	24	10.13
Total	237	100%

Table 9

Courses per Academic Department (16 and 1st 8-week courses) by Division

Table of Academic Departments by Division			
Academic Departments	Division		
	Lower	Upper	Total
Arts, Humanities and SS	36	14	50
Biology, Chemistry, and ES	30	13	43
Business Administration	13	9	22
Education	4	13	17
Engineering and Tech	12	9	21
HPER	3	0	3
Language & Letters	21	1	22
Mathematics/Physics	17	2	19
Nursing and HS	11	5	16
Technical Trade	24	0	24
Total	171	66	237
Percentage	72%	28%	100%

Table 10

Low Enrolled Courses per Academic Department (16 and 1st 8-week courses)

Analysis Variable: Enrollment		
Academic Departments	Low Enrolled Courses (n<10)	Percent Low Enrolled Courses (n<10)
Arts, Humanities and SS	30	60%
Biology, Chemistry, and ES	30	70%
Business Administration	10	45%
Education	5	29%
Engineering and Tech	20	95%
HPER	3	100%
Language & Letters	4	18%
Mathematics/Physics	6	32%

Academic Departments	Low Enrolled Courses (n<10)	Percent Low Enrolled Courses (n<10)
Nursing and HS	9	56%
Technical Trade	11	46%
Total	128	54%

Table 11: Percentages in this table are based on total numbers per Academic Department (**Note: Clinical Sessions and Capstone have a cap of 8 students**). Here, Unique CRN values were considered. (ECED 4479, 4480 and EDUC 4479, 4480 have cap 6-8)

Average Student Enrollment per Course by Academic Departments (16 and 1st 8-week courses)

Academic Departments	Average Number of Students Lower Division	Average Number of Students Upper Division
Arts, Humanities and SS	10.0	7.1
Biology, Chemistry, ES	10.1	4.2
Business Administration	10.5	18.2
Education	12.5	9.1
Engineering and Tech	5.8	3.8
HPER	4.3	0.0
Language & Letters	13.1	3.0
Mathematics/Physics	12.2	6.0
Nursing and HS	10.1	7.0
Technical Trade	9.1	0.0
Total	10.2	8.0
General Average	9.5	

Table 12

Courses: Method of Instruction/Delivery (16 and 1st 8-week courses)

Table of Academic Departments by Instruction Methods					
Academic Departments	Instruction Methods				Total
	BOL	BTR	OL/OLP	TR	
Arts, Humanities and SS	17	5	20	8	50
Biology, Chemistry, and ES	3	7	10	23	43
Business Administration	0	7	13	2	22
Education	3	0	7	7	17
Engineering and Tech	2	0	3	16	21
HPER	2	0	0	1	3
Language & Letters	6	0	6	10	22
Mathematics/Physics	13	0	1	5	19

Academic Departments	BOL	BTR	OL/OLP	TR	Total
Nursing and HS	0	1	6	9	16
Technical Trade	0	0	0	24	24
Total	46	20	66	105	237
Percentage	19%	8%	28%	44%	100%

Table 13: BOL means blended online, BTR means blended traditional, OL/OLP means online, and TR means traditional.

Courses: Method of Instruction/Delivery vs Type of Faculty (16 and 1st 8-week courses)

Table of Faculty Types by Instruction Methods					
Faculty Types	Instruction Methods				
	BOL	BTR	OL/OLP	TR	Total
Adjunct	27	2	28.5	40	97.5*
Full time	19	18	37.5	65	139.5*
Total	46	20	66	105	237

Table 14: BOL means blended online, BTR means blended traditional, OL/OLP means online, and TR means traditional. If we consider unique faculty members, 46 are full time and 60 are adjunct. *The faculty who co-taught a course are treated as half in the calculation of Faculty Types.

Course Division (Lower or Upper) VS Faculty Type

Table of Faculty Types by DIVISION			
Faculty Types	DIVISION		
	LOWER	UPPER	Total
Adjunct	80.5 (34%)	17 (7%)	97.5*
Full-time	90.5 (38%)	49 (21%)	139.5*
Total	171*	66*	237

Table 15: *The faculty who co-taught a course are treated as half in the calculation

Average Student Enrollment per Method of Delivery (16 and 1st 8-week courses)

Table of average enrollment per Instruction Method	
Instruction Methods	Mean
BOL	9.2
BTR	6.5
OL/OLP	13.8
TR	7.6

Table 16

Courses & Student Credit Hours (SCH): Adjunct vs Full Time (16-week and 1st 8-week courses

Academic Department	#Course by Adjunct	#Courses by Full Time	SCH offered by Adjunct	SCH offered by Full Time
Arts, Humanities and SS	30*	20	967*	449
Biology, Chemistry, and ES	9	34	239	631
Business Administration	5	17	300	986
Education	7	10	221	300
Engineering and Tech	8	13	100	194
HPER	3	0	13	0
Language and Letters	12	10	529	321
Mathematics/Physics	9	10	441	352
Nursing and HS	2.5*	13.5*	72*	352*
Technical Trade	12	12	400	176
Total	97.5	139.5	3282	3761
Percentage (%)	41%	59%	47%	53%

*The faculty who co-taught a course are treated as half in the calculation of Faculty Types.

Table 17

Unduplicated Declared Majors by Field and Degree

Table of Major by Degree				
Majors	Degree			
	Associate	Bachelor	Certificate	Total
ALT Elementary(k-8)	0	0	13	13
ALT Secondary	0	0	15	15
ALT Special Education	0	0	8	8
Accounting	0	26	0	26
Allied Health	4	0	0	4
Barbering	9	0	2	11
Biology	4	28	0	32
Business Administration	46	0	0	46
Chemistry	3	0	0	3
Cosmetology	13	0	3	16
Criminal Justice	4	18	0	22
Early Childhood Education	5	30	0	35
Electrical Technology	10	0	0	10
Electromechanical Engr Tech	0	22	0	22
Elementary Education	6	33	0	39
Environmental Science	3	19	0	22
Film and Digital Media Arts	11	0	0	11
General Psychology	7	0	0	7
Humanities	0	5	0	5
Information Engineering Tech	8	18	0	26
Liberal Arts	27	0	0	27
Management	0	70	0	70
Mathematics	0	3	0	3

Table of Major by Degree				
Majors	Degree			
	Associate	Bachelor	Certificate	Total
Mechanical Engineering	0	1	0	1
Nuclear Operations Technology	2	0	0	2
Nursing	0	62	0	62
Nursing (AND)	41	0	0	41
Office Administration	2	0	0	2
Plumbing Apprenticeship	24	0	0	24
Pre-Engineering	2	0	0	2
Project Management	0	33	7	40
Psychology	0	45	0	45
Radiation Control Technician	0	0	5	5
Radiation Protection	24	0	0	24
Self-Design	0	5	0	5
Software Engineering	4	0	0	4
Substance Abuse Counselor	3	0	0	3
Non-Degree	0	0	0	287
Total	267	418	53	1025

Table 18

Unduplicated Majors declared by Gender

Table of Major by Gender			
Majors	Gender		
	F	M	Total
ALT Elementary (K-8)	12	1	13
ALT Secondary (7-12)	7	8	15
ALT Special Education	8	0	8
Accounting	18	8	26
Allied Health	4	0	4
Barbering	5	6	11
Biology	26	6	32
Business Administration	33	13	46
Chemistry	2	1	3
Cosmetology	15	1	16
Criminal Justice	16	6	22
Early Childhood Education	35	0	35
Electrical Technology	1	9	10
Electromechanical Engr Tech	8	14	22
Elementary Education	35	4	39
Environmental Science	8	14	22
Film and Digital Media Arts	3	8	11
General Psychology	5	2	7
Humanities	4	1	5
Information Engineering Tech	10	16	26

Table of Major by Gender			
Majors	Gender		
	F	M	Total
Liberal Arts	13	13	27*
Management	53	17	70
Mathematics	1	2	3
Mechanical Engineering	0	1	1
Nuclear Operations Technology	2	0	2
Nursing	59	3	62
Nursing (ADN)	37	4	41
Office Administration	1	1	2
Plumbing	0	4	5*
Plumbing Apprenticeship	2	22	24
Pre-Engineering	1	1	2
Project Management	25	15	40
Psychology	37	8	45
Radiation Control Technician	1	4	5
Radiation Protection	12	12	24
Self-Design	1	4	5
Software Engineering	0	4	4
Substance Abuse Counselor	1	2	3
Non-Degree	111	173	287*
Total	612	408	1025

*Three non-degree, one Liberal Arts, and one plumbing student responded neutral

Table 19

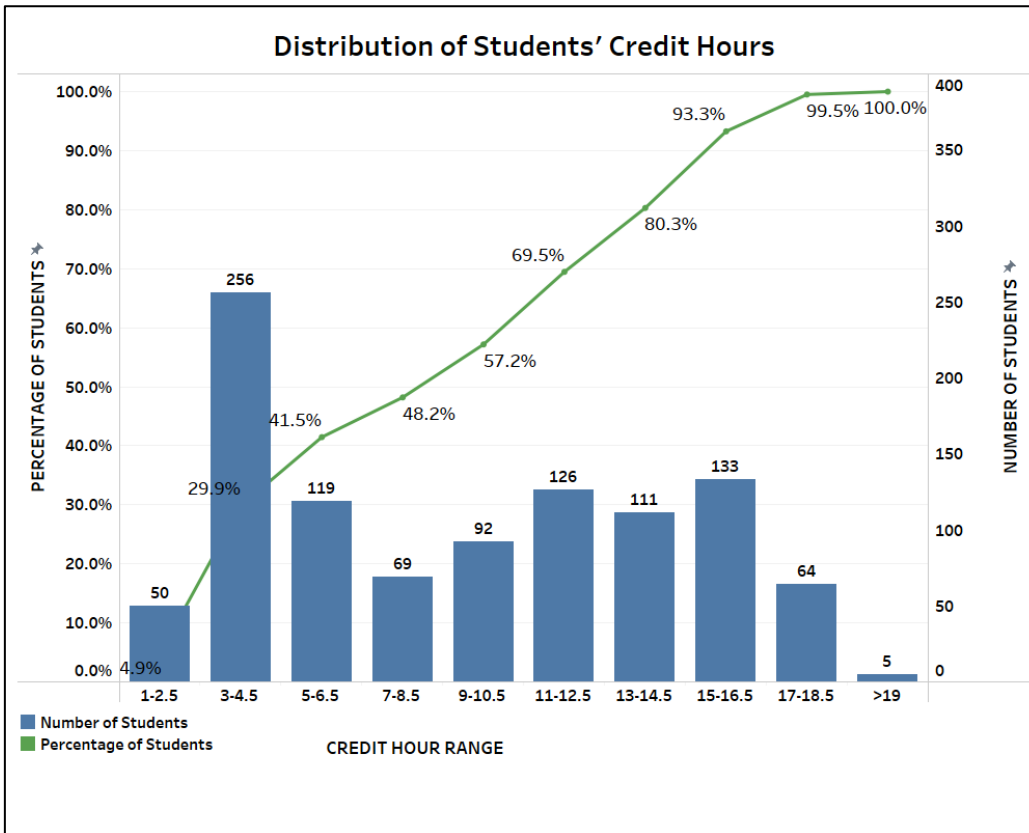
Unduplicated Declared Majors by Ethnicity

Table of Major by Ethnicity									
Majors	American Indian or Alaskan Nat	Asian	Black or African American	Hispanic of any race	Native Hawaiian /Pacific Island	Non-Resident Alien	Unknown / No Response	White non-Hispanic	Total
ALT Elementary(K-8)	4	1	0	4	0	0	0	4	13
ALT Secondary (7-12)	0	0	1	9	0	0	0	5	15
ALT Special Education	3	0	0	2	0	0	0	3	8
Accounting	6	0	1	17	0	0	0	2	26
Allied Health	0	0	0	4	0	0	0	0	4
Barbering	1	1	0	9	0	0	0	0	11
Biology	1	0	0	26	0	0	0	5	32
Business Administration	9	0	3	32	0	0	1	1	46
Chemistry	0	0	0	3	0	0	0	0	3
Cosmetology	2	0	0	12	0	0	0	2	16
Criminal Justice	3	0	0	18	0	0	0	1	22
Early Childhood Education	10	1	0	24	0	0	0	0	35
Electrical Technology	0	0	0	9	0	0	0	1	10
Electromechanical Engr Tech	0	0	0	19	0	0	0	3	22

Table of Major by Ethnicity									
Majors	American Indian or Alaskan Nat	Asian	Black or African American	Hispanic of any race	Native Hawaiian /Pacific Island	Non-Resident Alien	Unknown / No Response	White non-Hispanic	Total
Elementary Education	4	2	1	24	1	0	1	6	39
Environmental Science	4	1	0	15	0	0	0	2	22
Film and Digital Media Arts	2	0	2	6	0	0	0	1	11
General Psychology	2	0	0	5	0	0	0	0	7
Humanities	1	0	1	3	0	0	0	0	5
Information Engineering Tech	7	2	0	15	0	0	0	2	26
Liberal Arts	4	1	0	21	0	0	0	1	27
Management	3	1	3	55	0	2	2	4	70
Mathematics	0	0	0	2	0	1	0	0	3
Mechanical Engineering	0	0	0	1	0	0	0	0	1
Nuclear Operational Technology	0	0	0	2	0	0	0	0	2
Nursing	2	1	0	47	0	1	0	11	62
Nursing (ADN)	3	0	0	32	1	0	0	5	41
Office Administration	0	0	0	2	0	0	0	0	2
Plumbing	1	0	0	3	0	0	0	1	5
Plumbing Apprenticeship	4	0	0	10	0	0	1	9	24
Pre-Engineering	0	0	0	2	0	0	0	0	2
Project Management	5	0	0	29	0	2	0	4	40
Psychology	3	1	2	35	0	0	0	4	45
Radiation Control Technician	0	0	1	4	0	0	0	0	5
Radiation Protection	2	1	0	16	0	0	1	4	24
Self-Design	1	0	1	2	0	0	0	1	5
Software Engineering	1	0	0	3	0	0	0	0	4
Substance Abuse Counselor	0	0	0	2	0	0	0	1	3
Non-Degree	24	7	3	204	0	0	9	40	287
Total	112	20	19	728	2	6	15	123	1025

Table 20

Distribution of total SCHs enrolled by each student



Graph 2: The combo chart showing Student Credit Hours and Cumulative Share of Students. Students who take between 12 and 18 credits are only charged tuition for the first 12 credits. Because of this distribution and the attendance of dual credit students, only **89%** of the SCHs generated are eligible for tuition. Employee tuition waivers decrease this number even further.

Enrollment by Location

City	Frequency	Percent
Espanola	264	25.76
Santa Fe	87	8.49
Santa Cruz	81	7.90
Albuquerque	78	7.61
Ohkay Owingeh	46	4.49
Alcalde	37	3.61
Chimayo	36	3.51
Fairview	27	2.63
Rio Rancho	27	2.63
Los Alamos	24	2.34

City	Frequency	Percent
El Rito	18	1.76
White Rock	18	1.76
Hernandez	17	1.66
Medanales	15	1.46
Taos	13	1.27
Penasco	12	1.17
Abiqui	10	1.00

Table 21: Here only location with 1% and more contribution were considered

Enrollment by High School (First-Time Any College)

High School	Percent
GED New Mexico	27.08
Espanola Valley High School	22.92
Pojoaque High School	10.42
Los Alamos High School	6.25
Apostolic Praise Christian Academy	4.17
Penn Foster Home School	4.17
Capital High School	2.08
Deming High School	2.08
Massachusetts	2.08
McCurdy High School	2.08
Pesasco Jr-Sr High School	2.08
Santa Fe Indian School	2.08
Utah	2.08
Victory Faith Christ	2.08
Washington	2.08

Table 22: This table shows enrollment of FTAC students by high school (only first top 15 High School by enrollment were considered)

Enrollment by High School (Dual Credit Students)

High School	Count
Espanola Valley High School	90
Mesa Vista High School	21
Coronado High School	12
McCurdy High School	12
Penasco Jr-Sr High School	12
Pojoaque High School	7
Jamez Valley High School	6
Los Alamos High School	2
IOWA	1
NM School for the Arts	1
New Mexico Connections Academy	1
Total	165

Table 23